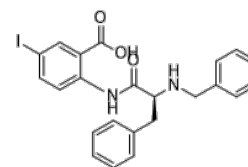


Product Name : CW069
Cat. No. : PC-24692
CAS No. : 1594094-64-0
Molecular Formula : C₂₃H₂₁IN₂O₃
Molecular Weight : 500.34
Target : Kinesin
Solubility : 10 mM in DMSO



CAS: 1594094-64-0

Biological Activity

CW069 (CW-069) is a specific, allosteric small molecule inhibitor of microtubule motor protein HSET (encoded by KIFC1 in humans and Kifc5a in mice) with IC₅₀ of 75 uM.

CW069 shows statistically significant selectivity over KSP in vitro.

CW069 induces multipolar mitoses only in cells containing supernumerary centrosomes.

CW069 significantly reduced cell viability in the DTX-resistant cells

CW069 is a valuable tool for probing HSET function and, by reducing the growth of cells containing supernumerary centrosomes.

References

Watts CA, et al. Chem Biol. 2013 Nov 21;20(11):1399-410.

Sekino Y, et al. J Clin Med. 2019 Feb 9;8(2):225.

Caution: Product has not been fully validated for medical applications. Lab Use Only!

E-mail: tech@probechem.com